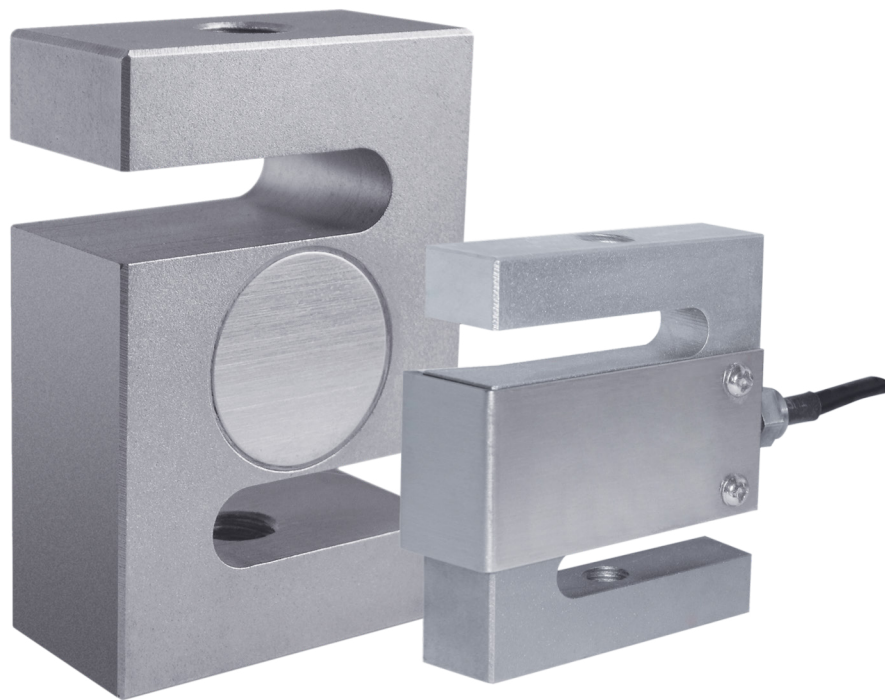


Tension / Compression Load Cell ZFA with a Rated Load of 2.5 kg ... 5 t

Data sheet



Performance Features

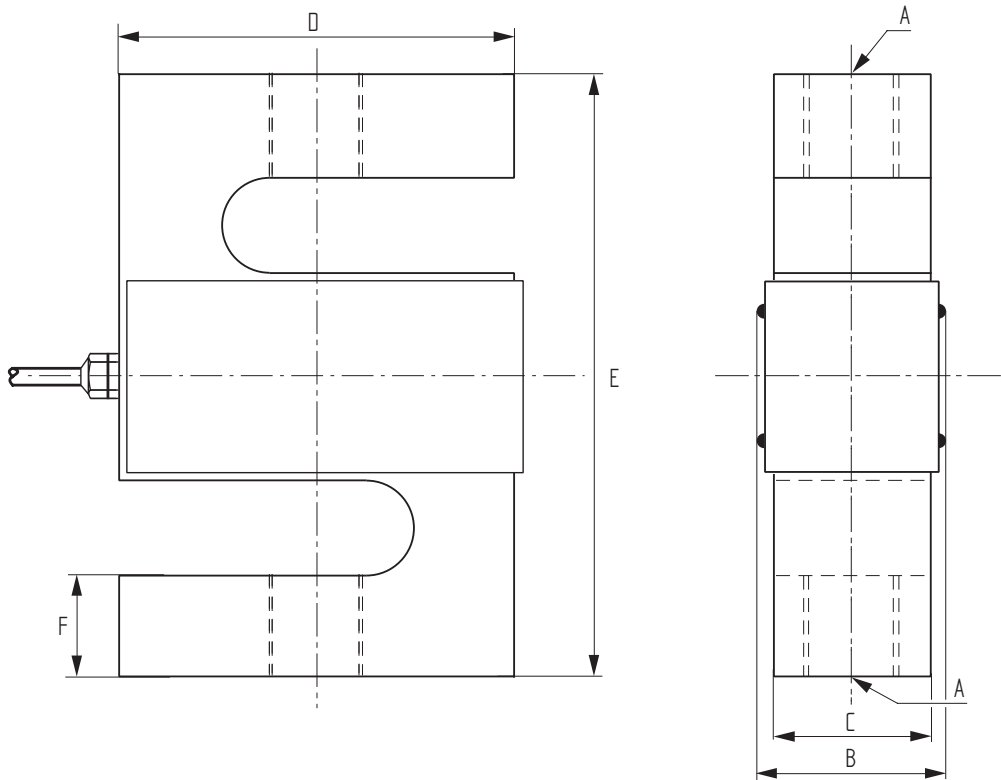
- Tension and compression load cell made of nickel plated steel
- Protection class IP65
- Accuracy up to $\pm 0,03$ % of rated load

Application

- Food industry
- Coal and steel industry
- Chemical / pharmaceutical industry
- Waste management / recycling
- Packaging technology



Dimensions in mm



Article-No.	Rated Load [kg]	Dimensions [mm]						Weight [kg]
		A	B	C	D	E	F	
106712	25	M8	19.7	13	51	64	10.5	0.35
106713	50							
106714	100	M12	25.6	19	51	76	13.5	0.6
106715	200							
106716	500							
106717	1000	M12	-	25.4	54	76	13.5	0.75
106718	2500	M18 x 1.5	-	25.4	76	108	21	1.5
106719	5000							

Connection Assignment

Electrical Connection			
Function	Tension Load Wire Color		Compression Load Wire Color
Excitation (+)	Red	●	Red ●
Signal (+)	Green	●	White ○
Signal (-)	White	○	Green ●
Excitation (-)	Black	●	Black ●

Technical Data

Type	ZFA	
Rated load E	kg	25; 50; 100; 200; 500
	t	1; 2.5; 5
Combined error	% E	±0.03
Temperature coefficient of zero signal	% E/°C	±0.002
Temperature coefficient of characteristic value	% E/°C	±0.002
Load creep d_{cr, F} in 30 min.	% E	±0.02
Zero balance	% E	±1
Rated output at E C_{nom}	mV/V	3 ±0.5%
Rated range of excitation voltage B_{U, nom}	V	1 ... 15
Input resistance R_e	Ω	385 ±10
Output resistance R_a	Ω	350 ±5
Insulation resistance R_{is}	MΩ/50V	> 5000
Electrical connection		Cable, PVC, 5 m
Material cable gland		Stainless Steel
Rated temperature range B_{T, nom}	°C	-10 ... 50
Operating temperature range B_{T, G}	°C	-20 ... 60
Limit load E_{lim}	% E _{max}	120
Breaking load E_b	% E _{max}	150
Level of protection	EN 60529	IP65
Material		Nickel plated steel
Weight		See drawing

Accessories

Weighing Electronics

ACLJB-A	CPJ/CPJ2S	IPE50 Panel
		

Further suitable accessories you can find on our homepage under:

https://www.lorenz-messtechnik.de/english/products/lc_weighing-electronics.php.